

SPECIFICATIONS

Pump Kit on S 17

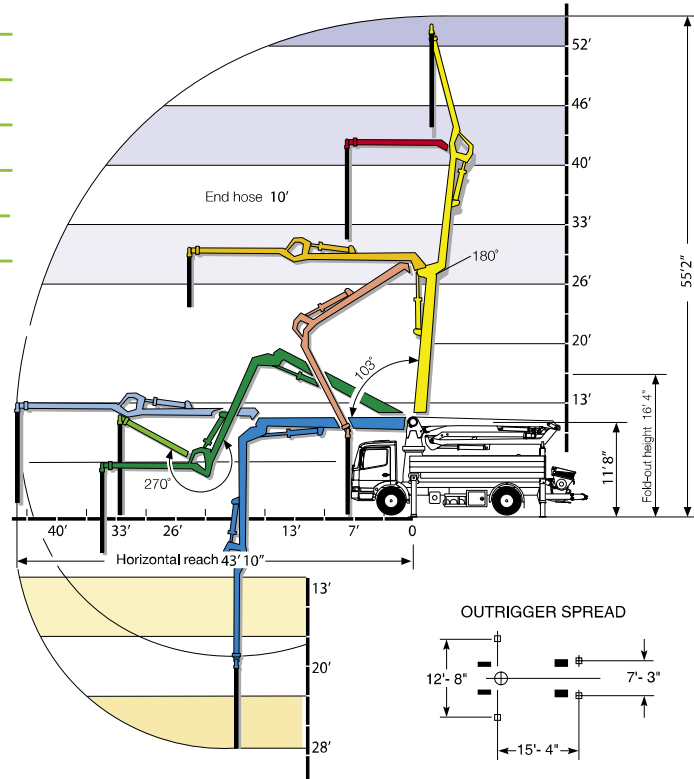
2023-3 110/75 SC

| | U.S. | Metric |
|--|------|--------|
| Theor. Concrete Output Per Hour (cubic yards - cubic meters) | 124 | 95 |
| Maximum Pressure on Concrete (psi - bar) | 1095 | 76 |
| Maximum Strokes Per Minute | 19 | 19 |
| Pump Cylinder Diameter (in. - mm) | 9 | 230 |
| Pump Cylinder Stroke Length (in. - mm) | 79 | 2000 |
| Differential Cylinder Size (in. - mm) | 4.3 | 110 |
| Maximum Aggregate Size (in. - mm) | 2.5 | 63.5 |

Boom Specifications

| | U.S. | Metric |
|------------------------------------|-------|--------|
| Pipeline Diameter (in. - mm) | 5 | 125 |
| Vertical Reach (ft.-in. - m) | 55-2 | 16.8 |
| Horizontal Reach (ft.-in. - m) | 43-10 | 13.5 |
| Net Horizontal Reach (ft.-in. - m) | 36-10 | 11.2 |
| Unfolding Height (ft.-in. - m) | 16-4 | 5 |
| Section Lengths | | |
| First Section (ft.-in. - m) | 16-8 | 5.1 |
| Second Section (ft.-in. - m) | 14-9 | 4.5 |
| Third Section (ft.-in. - m) | 11-11 | 3.6 |
| Slewing Range (degrees) | 370° | 370° |
| End hose length (ft. - m) | 10 | 3 |

Specifications are subject to change without prior notice.



1/09 - 1M

